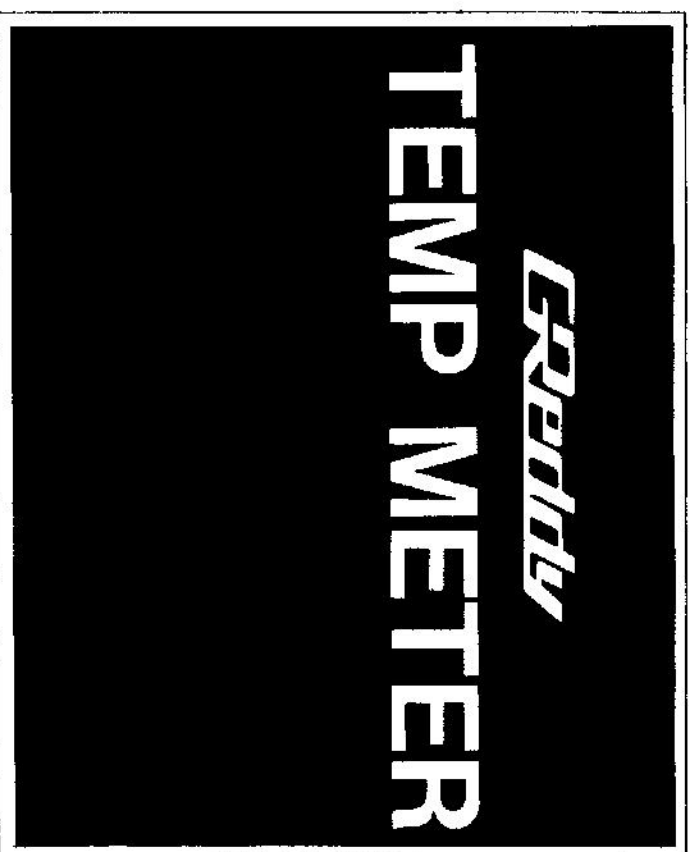


TRUST SUPER TUNING SYSTEM AIMING AT REAL COMPETITIONS.

600⁰ WARNING METER

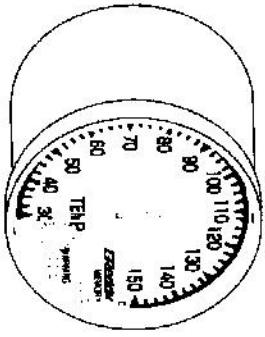


Instruction Manual

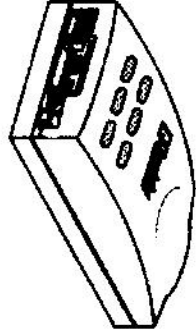
TRUST CO., LTD.

MADE IN JAPAN.

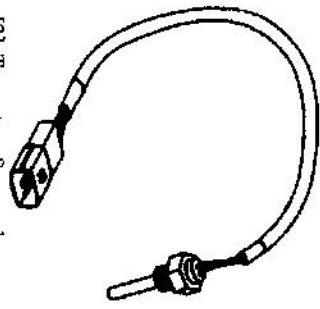
Parts List:



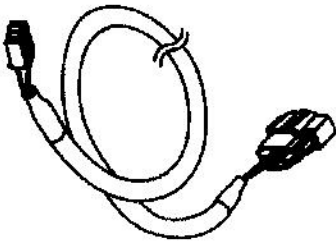
[1] Temperature Meter 1 pc.



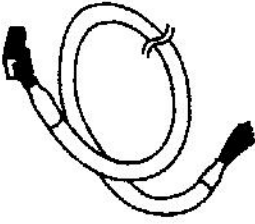
[2] Data Link Unit 1 pc.



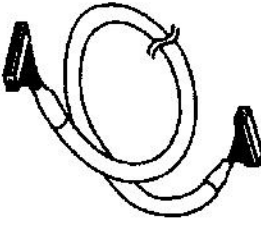
[3] Temperature Sensor 1 pc.



[4] Sensor Harness 3m 1 pc.

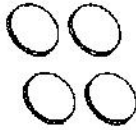


[5] Electrical Harness 0.5m 1 pc.



[6] Meter Harness 2m 1 pc.

Parts List:



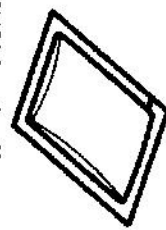
[7] Double-sided Tape 1 pc.



[8] Meter Label Set 1 pc.



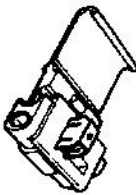
[10] Wire Tie 15cm 4 pcs.



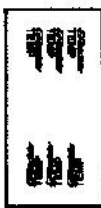
[11] Mounting Cleaner 1 pc.



[13] Instruction Manual 1 pc.



[9] Electrical Tap 4 pcs.



[12] Harness Label Set 1 pc.



[14] Warning Adjusting Socket 1 pc.

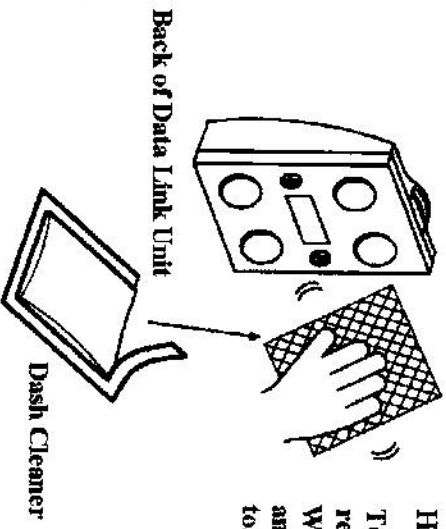
Installation:

Data Link Unit Mounting

When using the provided double-sided tape to mount the data link unit, clean the mounting surfaces with the provided dash cleaner

⚠ Caution

- ⚠ Do not use the dash cleaner on any other products.
- ⚠ If there is dirt, dust, or oil on the mounting surface, the double-sided tape may not adhere to the dash.



How to use:
Tear the silver package open and remove the dash-cleaner. Wipe the back of the data link unit and the dash surface, to be mounted to.

Installation:

Meter Mounting

ⓘ Important

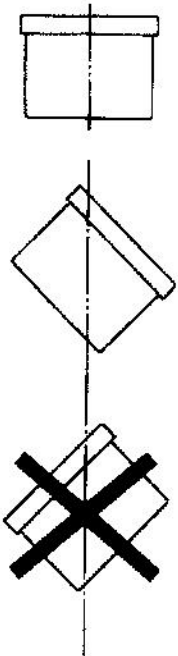
- ⓘ When looking for a location to mount the meter, be sure not to have the meter interfere with the driver's view of the road or other important instruments.

Note

Mounting brackets for these warning meters are available for simple installation.
(GReddy Meter Band 369601 or GReddy Meter Holder 369602)

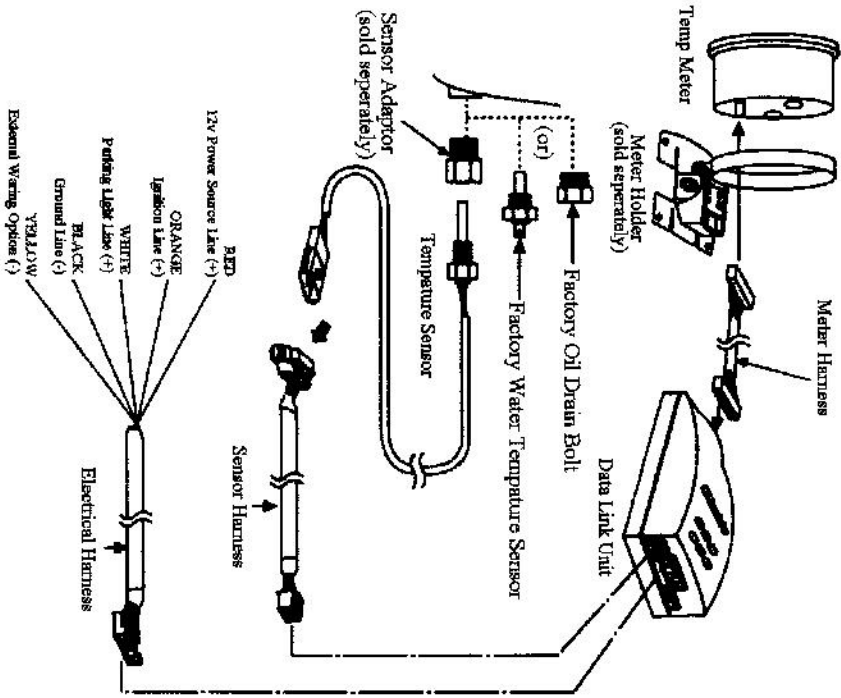
⚠ Caution

- ⚠ Never mount the meter facing downward. Always mount the meter horizontally or facing upward. Mounting the meter facing downward can cause the meter to malfunction.



Installation:

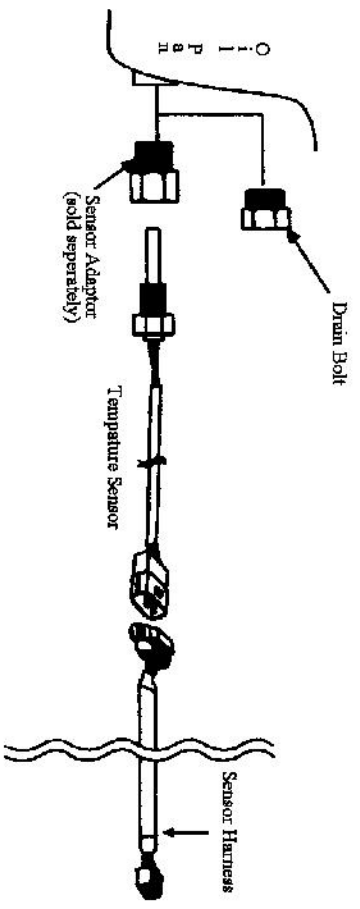
Wiring Diagram



Installation:

Option #1 Oil Temp Meter

- CAUTION**
- ⚠ Avoid mounting the sensor harness near any ignition systems.
 - ⚠ Make sure you catch the oil with a pan when removing the oil drain bolt.
 - ⚠ Make sure the engine is not hot when removing the drain bolt.
 - ⚠ Make sure to refill the engine oil after installation of the sensor.

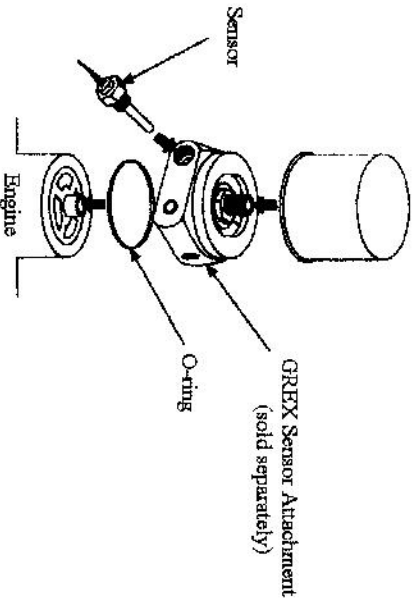
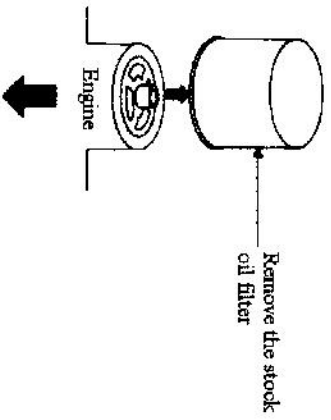


Installation:

Option # 2 Oil Temp Meter

Sensor Installation

(Using GREX sensor attachment unit) *Sold Separately*



Important

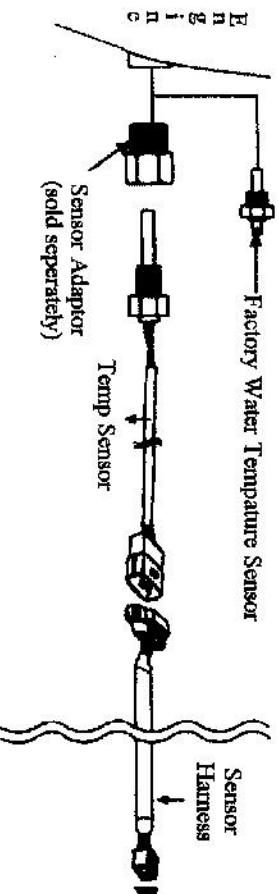
If you are using the GREX Oil Cooler Kit, the temperature sensor can be directly installed to the oil block of the oil cooler kit.

Installation:

Option # 3 Water Temp Meter

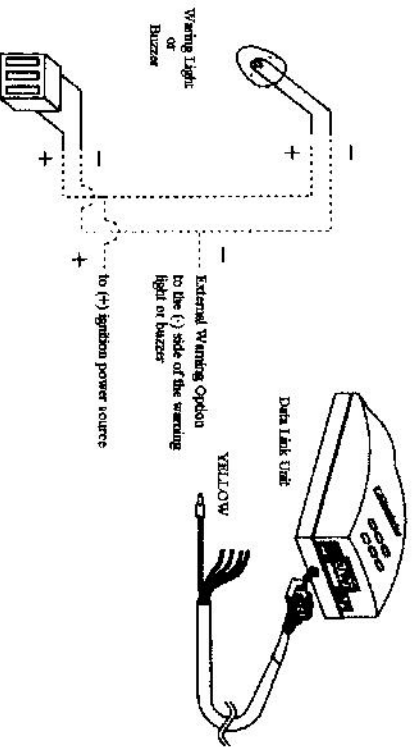
CAUTION

- ⚠ Make sure to catch the coolant with a pan, when removing the factory water temperature sensor.
- ⚠ Do not install when the engine is hot. Cool down the engine and remove the radiator cap before installation.
- ⚠ Make sure to use teflon tape on the sensor threads to achieve a proper seal.
- ⚠ Check and restore the water-coolant level after installation.



Installation:

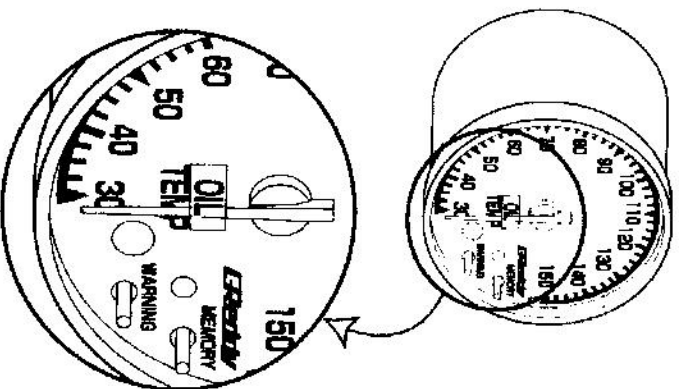
External Warning Option Output



Installation:

How to use the meter decal

Since this meter can be used either as a water or oil temperature meter, included is a sheet of meter labels to specify the appropriate fluid temperature.



Apply the label as shown in the picture, onto the outside of the meter. (left)

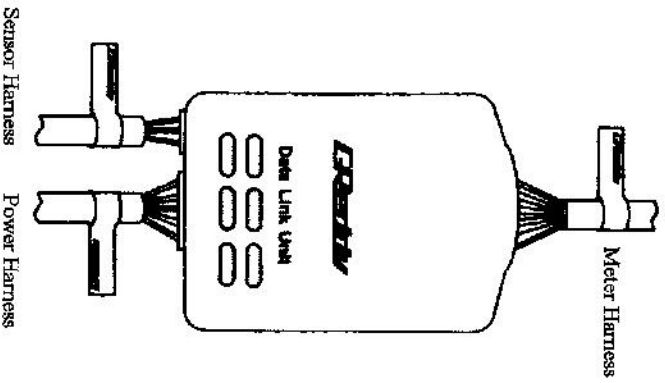
When using the meter as an oil temp meter use the "oil" decal, when using the meter as an water temp meter use the "water" decal.

Suggestions:

How to use the Harness Labels

If you are installing more than one warning meter, it is suggested to use the provided decal set to label each of the harness for each individual meter type.

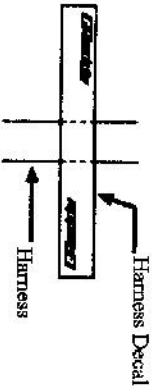
The decal set includes three labels: 1) Meter harness 2) Sensor Harness 3) Power Harness. Install as shown below.



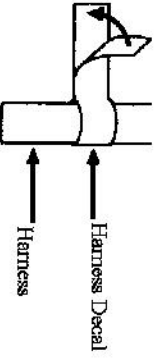
How to apply:

Peel label off from the decal sheet

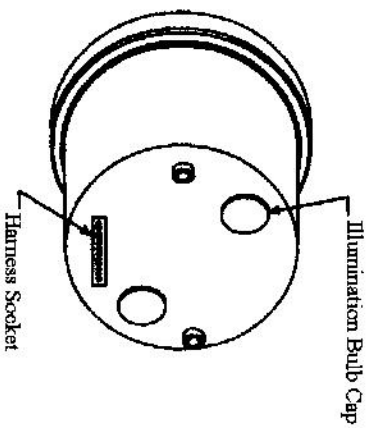
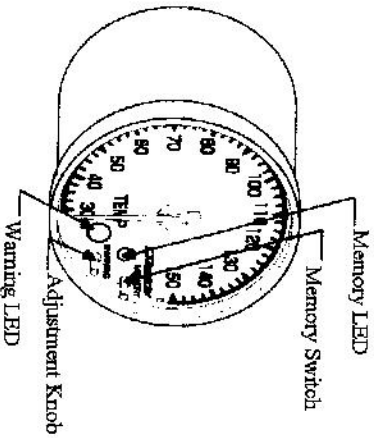
Apply as shown below



Fold the label onto the harness as shown below.



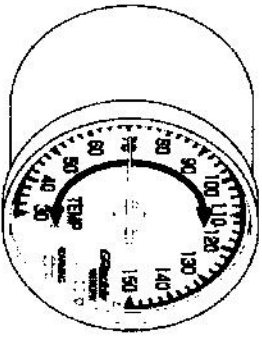
Operation:



- **Memory Switch**
 - Used to switch to "Peak" mode
 - Used to reset the memory
- **Memory L.E.D.**
 - Illuminates
 - Flashes when resetting the memory
- **Adjustment Knob**
 - Used to adjust the warning point (set)
- **Warning L.E.D.**
 - Illuminates when in the warning mode
 - Flashes when the harness is disconnected or when there is a "short" in the electrical system

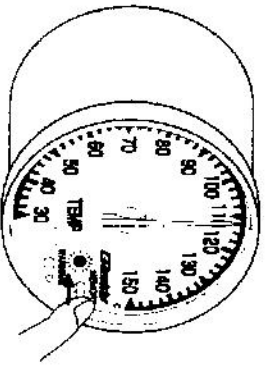
Operation:

Real-time Meter Mode:



Displays the water or oil temperature reading.

Peak Water or Oil Temp Mode



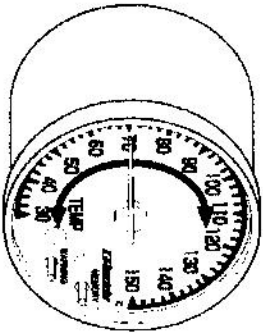
Press memory switch momentarily to get into "peak mode"

When "peak mode" is turned on, the memory LED will illuminate and the meter will display the peak temperature achieved.

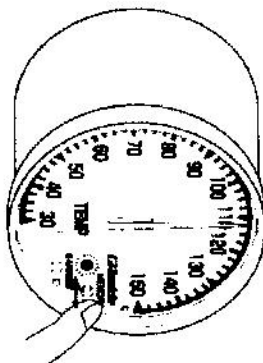
Press the memory switch again, to return to "real-time mode"

Operation:

Resetting the Memory



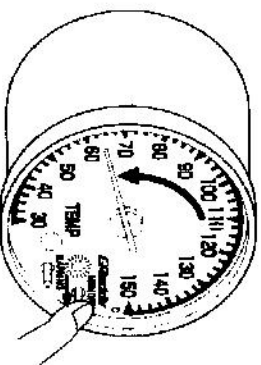
Real-time Meter Mode



Peak Mode

Press the memory switch for over 2 sec., to reset the memory

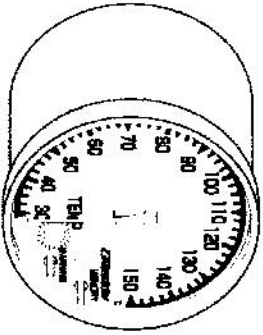
Memory can be reset in both "Real-time Meter Mode" or "Peak Mode"



Operation:

Check Mode

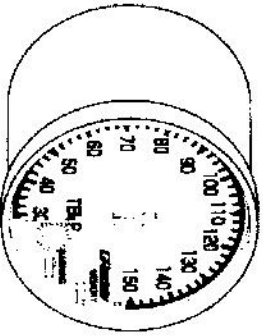
Bad Harness Connection Check Feature



When there is a bad sensor or ground connection, the warning LED will flash quickly.
(Flash, flash -- flash, flash --flash, flash)

This feature does not check the connection on the power harness.

Short Circuit Check Feature



When there is a short circuit in the sensor or harness, the warning LED will flash slow.
(flash -- flash -- flash)

This feature does not check for short circuits on the power harness.